

MONTHLY MEMBERSHIP PROGRESS REPORT

LOCATION COLORADO

District 6 W

Results as of: 12/31/2022

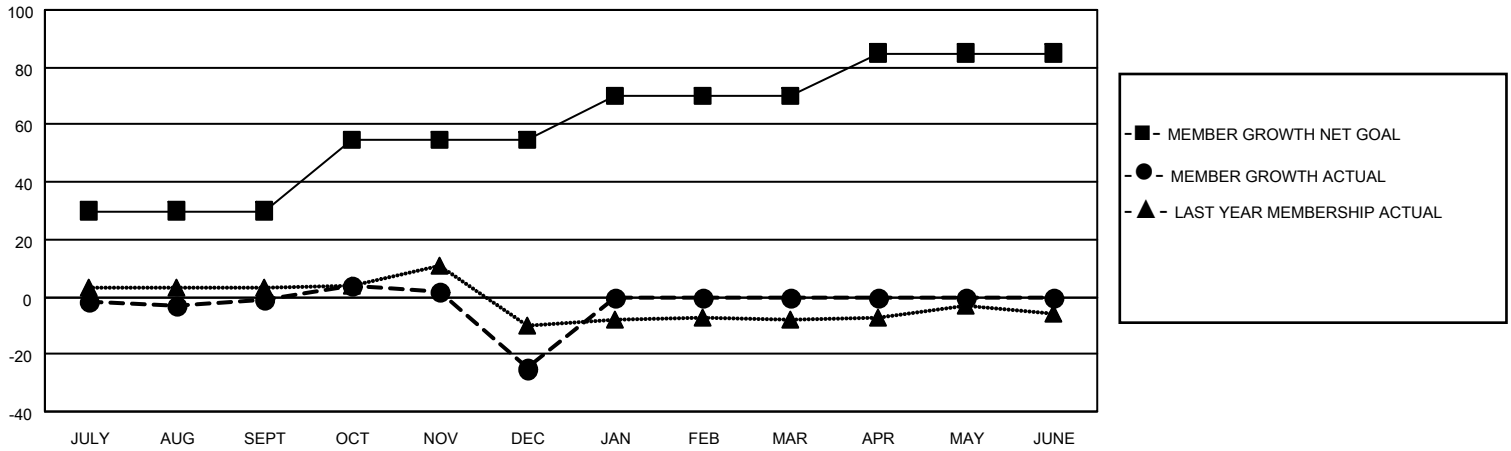
Clubs			
RESULTS FOR 2022-2023			
QUARTER	NEW CLUB GOAL	NEW CLUBS	DROPPED CLUBS
JULY/AUG/SEPT	0	0	0
OCT/NOV/DEC	1	0	0
JAN/FEB/MAR	0	0	0
APR/MAY/JUNE	0	0	0

Members			
RESULTS FOR 2022-2023			
QUARTER	MEMBER GROWTH NET GOAL	MEMBER GROWTH ACTUAL	DROPPED MEMBERS ACTUAL (including transfers)
JULY/AUG/SEPT	30	23	21
OCT/NOV/DEC	25	19	39
JAN/FEB/MAR	15	0	0
APR/MAY/JUNE	15	0	0

GOALS AND ACTUAL NEW CLUBS CUMULATIVE



GOALS AND ACTUAL MEMBERS CUMULATIVE



DROPPED CLUBS: 0

12 CLUBS OF 28 ADDED 1 OR MORE NEW MEMBERS

GENDER DISTRIBUTION

MALE	423 (60.95%)
FEMALE	271 (39.05%)
NON BINARY	0 (0.00%)
PREFER NOT TO ANSWER	0 (0.00%)

DROPPED MEMBERS

DECEASED	8
CLUB CANCELLED	0
OTHER	52
TOTAL	60

[CLICK HERE FOR CUMULATIVE MEMBERSHIP DATA](#)

TOTAL FAMILY UNIT MEMBERS	135
FAMILY MEMBERS PAYING HALF DUES	68